



## MODEL 7661-K003

### KEY FEATURES

- Comprehensive characterization:
  - Chromaticity
  - Luminance
  - Uniformity
  - Dies defect
  - Voltage / Current
- Test area: 800 x 600mm
- Automated:
  - XY-table
  - LED position searching
  - Region of Interest definition
- Darkroom enclosure
- GUI Functions for complete automated testing
- Detailed analysis of image data

## MINI LED BACKLIGHT MODULE AUTOMATIC OPTICAL TEST SYSTEM MODEL 7661-K003

Chroma 7661-K003 Mini LED Backlight Module Test System offers comprehensive testing of backlight modules. A wide range of selectable functions customize the system to the UUT's photoelectric characteristics and test requirements.

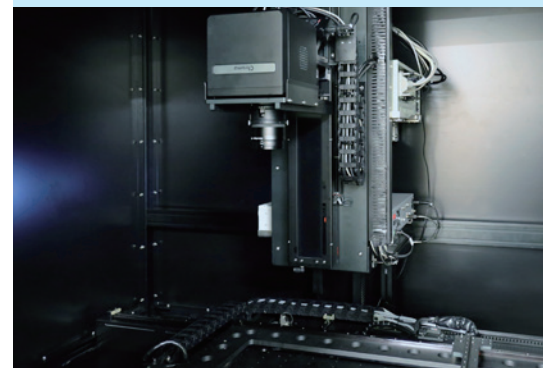
The 7661-K003 combines a 2D color analyzer supported by a Z-axis system for a variable working distance, and a large-area XY-table for capturing a wide field of view (FOV). The LED electrical tester regulates the power for the UUT. Customizable test fixtures fit various UUT types. The integrated darkroom enclosure blocks the influence of any external light for more accurate measurement and reliable data.

To simulate the human eye, the embedded Chroma 71803 2D color analyzer offers a high-resolution camera integrated with color and ND filters creating a sensing solution complying with CIE standards.

Its measurement of chromaticity, luminance, contrast, uniformity, and correlated color temperature (CCT) can be applied to a large variety of displays.

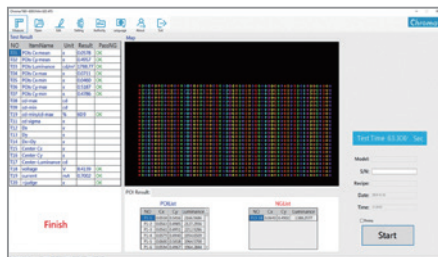
For complete electrical testing, a Chroma 58221-200-2 LED test module is incorporated to define the operating power range under accurate current and voltage control. Other power modules are also available to conform with different test conditions and standards.

Chroma 7661-K003 system software can obtain the chromaticity and luminance for each region of interest. The software can also detect deficiencies, chromatic aberration and shifts, along with other abnormalities in the LEDs. Programming includes multiple test steps with definable parameters yielding convenient and efficient operation.



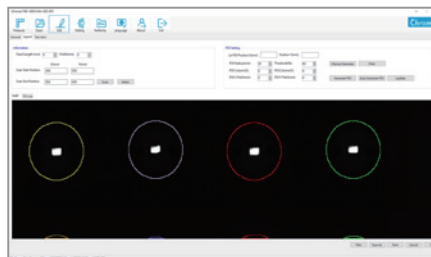
**Chroma**

## Optical Master System Software



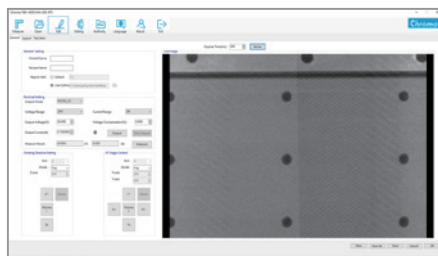
### Test Main Window

- Test items
- Results
- Statistics
- Realtime UUT status



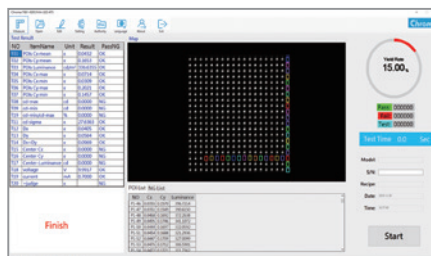
### Program Editor

- Define the ROI
- Automatic ROI tracking
- Set scan position
- Test step editor



### Instant Display

- Real-time imaging
- FOV measurement
- User focus
- Exposure setup
- Continuous imaging



### Defect Inspection

Defect comparison of scanned die to a golden sample

## SYSTEM CONFIGURATION



## SPECIFICATIONS

Model	7661-K003
2D Measuring Probe	71803 Series
Software	Optical Master System Software
UUT Test Range	800x600 (mm)
Environmental Vibration	Office ISO-16000 or above
Dust-free Level	Class 10,000
Voltage	AC 220V
Temperature Range	20~30°C (52°F to 62°F)
Humidity Range	<75% (no condensation)
Dimension (LxWxH)	2000 X 1800 X 2300 (mm)

Model	71803-2	71803-3 (option)
Resolution	4896(H) x 3264(V) pixels (16M)	7920(H) x 6004(V) pixels (47M)
Luminance <sup>*1</sup>	Test Range	0.5 cd/m <sup>2</sup> to 20,000 cd/m <sup>2</sup> >20,000 cd/m <sup>2</sup> , maximum with optional ND filters
	Accuracy	≤ ±3%
Chromaticity <sup>*2</sup>	Repeat Accuracy (2σ)	≤ ±0.5%
	Accuracy	≤ ±0.002
Measurement Time	Repeat Accuracy (2σ)	≤ ±0.0006
		≤ 5 sec.@100cd/m <sup>2</sup>
Measurement Items	Luminance, Chromaticity, CCT, Contrast, Uniformity	
Measurement Units	cd/m <sup>2</sup> , CIE (x,y) and (u', v'), Kelvin (CCT)	

Note\*1: In the camera's FOV, the standard A light source follows the Chroma test conditions at 100nit and the measurement point is 100 pixels, but the chromaticity under 1cd/m<sup>2</sup> is not included in the specifications.

Note\*2: All specifications are subject to change without notice.

Get more product & global distributor information in Chroma ATE APP

## ORDERING INFORMATION

7661-K003: Mini LED Backlight Module Automatic Optical Test System

71803-3 : 2D Color Analyzer (optional)



iOS



Android

Search Keyword

7661-K003

HEADQUARTERS  
CHROMA ATE INC.  
88 Wenmao Rd.,  
Guishan Dist.,  
Taoyuan City  
333001, Taiwan  
T +886-3-327-9999  
F +886-3-327-8898  
www.chromaate.com  
info@chromaate.com

U.S.A.  
CHROMA ATE, INC.  
(U.S.A.)  
7 Chrysler Irvine,  
CA 92618  
T +1-949-421-0355  
F +1-949-421-0353  
Toll Free +1-800-478-2026  
www.chromaau.com  
info@chromaau.com

EUROPE  
CHROMA ATE EUROPE B.V.  
Morsestraat 32,  
6716 AH Ede,  
The Netherlands  
T +31-318-648282  
F +31-318-648288  
www.chroma.eu.com  
salesnl@chroma.eu.com

CHROMA GERMANY GMBH  
Südtiroler Str. 9, 86165,  
Augsburg, Germany  
T +49-821-790967-0  
F +49-821-790967-600  
www.chroma.eu.com  
salesde@chroma.eu.com

JAPAN  
CHROMA JAPAN  
CORP.  
888 Nippa-cho,  
Kouhoku-ku,  
Yokohama-shi,  
Kanagawa,  
223-0057 Japan  
T +81-45-542-1118  
F +81-45-542-1080  
www.chroma.co.jp  
info@chroma.co.jp

KOREA  
CHROMA ATE  
KOREA BRANCH  
3F Richtogether  
Center, 14,  
Pangyojeok-ro 192,  
Bundang-gu,  
Seongnam-si,  
Gyeonggi-do  
13524, Korea  
T +82-31-781-1025  
F +82-31-8017-6614  
www.chromaate.co.kr  
info@chromaate.com

CHINA  
CHROMA ELECTRONICS  
(SHENZHEN) CO., LTD.  
8F, No.4, Nanyou Tian  
An Industrial Estate,  
Shenzhen, China  
T +86-755-2664-4598  
F +86-755-2641-9620  
www.chroma.com.cn  
info@chromaate.com

SOUTHEAST ASIA  
QUANTEL PTE LTD.  
(A company of Chroma Group)  
25 Kallang Avenue #05-02  
Singapore 339416  
T +65-6745-3200  
F +65-6745-9764  
www.quantel-global.com  
sales@quantel-global.com